



Hox-A1/B1/D1 Polyclonal Antibody

| | |
|---------------------------|---|
| Catalog No | YP-Ab-15759 |
| Isotype | IgG |
| Reactivity | Human;Mouse |
| Applications | IHC;IF;ELISA |
| Gene Name | HOXB1 |
| Protein Name | Homeobox protein Hox-B1 |
| Immunogen | The antiserum was produced against synthesized peptide derived from human HOXA1/B1/D1. AA range:216-265 |
| Specificity | Hox-A1/B1/D1 Polyclonal Antibody detects endogenous levels of Hox-A1/B1/D1 protein. |
| Formulation | Liquid in PBS containing 50% glycerol, 0.5% BSA and 0.02% sodium azide. |
| Source | Polyclonal, Rabbit,IgG |
| Purification | The antibody was affinity-purified from rabbit antiserum by affinity-chromatography using epitope-specific immunogen. |
| Dilution | IHC: 1/100 - 1/300. ELISA: 1/10000.. IF 1:50-200 |
| Concentration | 1 mg/ml |
| Purity | ≥90% |
| Storage Stability | -20°C/1 year |
| Synonyms | HOXB1; HOX2I; Homeobox protein Hox-B1; Homeobox protein Hox-2I; HOXA1; HOX1F; Homeobox protein Hox-A1; Homeobox protein Hox-1F; HOXD1; HOX4; HOX4G; Homeobox protein Hox-D1; Homeobox protein Hox-GG |
| Observed Band | |
| Cell Pathway | Nucleus. |
| Tissue Specificity | PCR rescued clones, |
| Function | function:Sequence-specific transcription factor which is part of a developmental regulatory system that provides cells with specific positional identities on the anterior-posterior axis. Acts on the anterior body structures.,polymorphism:The two common alleles; HOX1B*A and HOX1B*B have a frequency of 78.8% and 21.2% respectively.,similarity:Belongs to the Antp homeobox family. Labial subfamily.,similarity:Contains 1 homeobox DNA-binding domain., |
| Background | This gene belongs to the homeobox family of genes. The homeobox genes encode a highly conserved family of transcription factors that play an important role in morphogenesis in all multicellular organisms. Mammals possess four similar homeobox gene clusters, HOXA, HOXB, HOXC and HOXD, located on different chromosomes, consisting of 9 to 11 genes arranged in tandem. This gene is one of several homeobox HOXB genes located in a cluster on |

chromosome 17. [provided by RefSeq, Jul 2008],

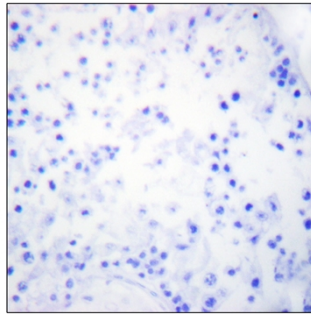
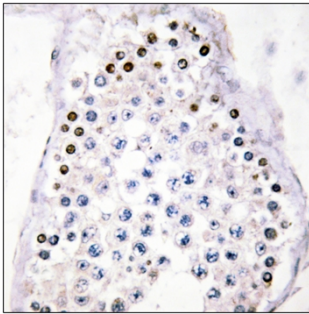
matters needing attention

Avoid repeated freezing and thawing!

Usage suggestions

This product can be used in immunological reaction related experiments. For more information, please consult technical personnel.

Products Images



Immunohistochemistry analysis of paraffin-embedded human testis tissue, using HOXA1/B1/D1 Antibody. The picture on the right is blocked with the synthesized peptide.